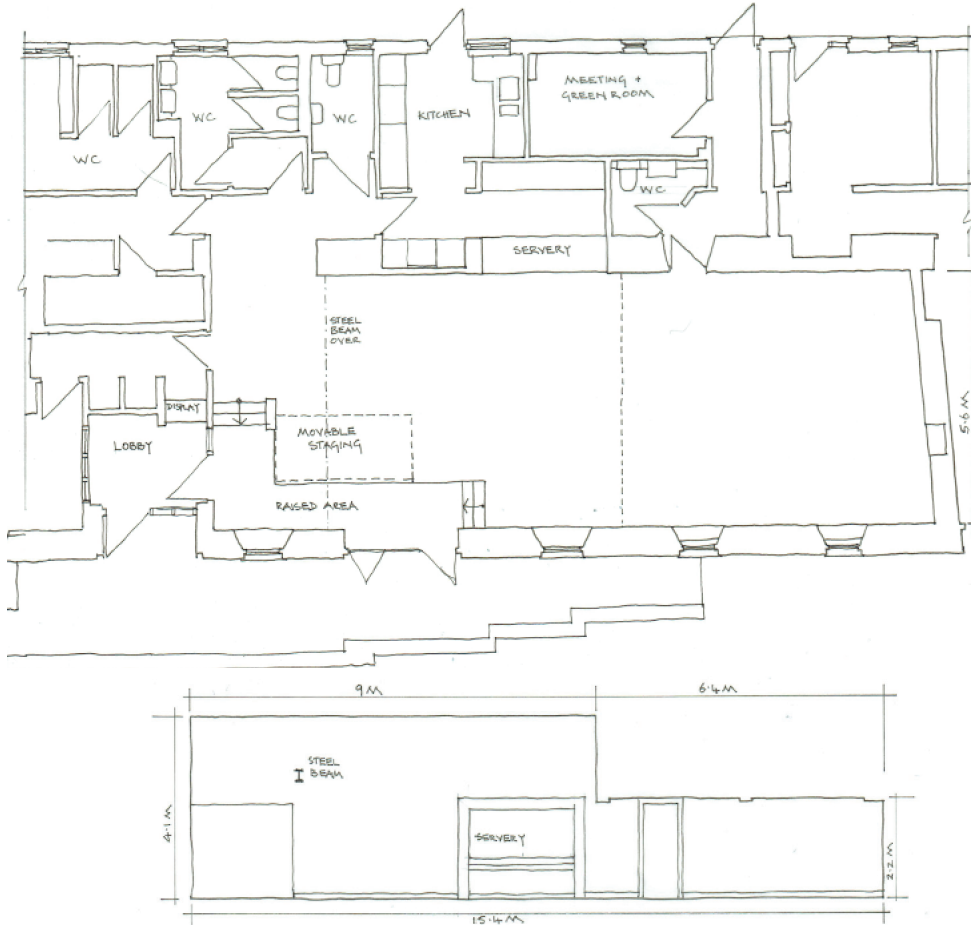


EYEMOUTH HIPPODROME



Hippodrome Allspace: dimensions 5.6m wide by 15.4m long, (86 m²)

There is a low ceiling section, 2.2m high, 6.4m*5.6m (36 m²) (79 m³) and a higher section 4.1 m high, 9m*5.6m (50 m²) (206 m³)

The space has flexible staging and can be set up to suit. A meeting room and wc are available for artists. Audience capacity from 50 to 80 people subject to layout.

PA System @ the Hippodrome

4 Mackie THUMP 12 ACTIVE speakers
2 speaker stands

LIVEPAD CRCF 12 channel mixer with FX

3 Shure microphones: SM58LC

3 DI Boxes: LD102 LD

3 fixed boom microphone stands

Cables etc



The Hippodrome: on the harbour

The Hippodrome is a multi-use arts space for exhibitions, music, theatre, poetry, film and creative and community events in the picturesque fishing town of Eyemouth.



View facing stage area (staging removed)



View facing south



View facing north



Panoramic view facing harbour

For information contact
space@eyemouthhippodrome.org
t: 01890 750099
m: 0759 569 1895

The Hippodrome
Harbour Road
Eyemouth
TD14 5HT

www.eyemouthhippodrome.org

